

Portable electronic stapler BH-11F

MAX

since 1942

JAPAN



MAX.
40 SHEETS

Flat clinch

Anytime, Anywhere, Friendly !!

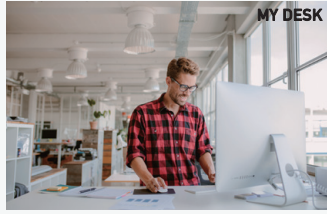
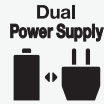
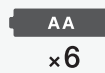
This highly reliable portable electric stapler was created using advanced technology from our expertise creating “finishing machines*” for photocopiers. Our unique design makes horizontal or vertical positioning possible, and allows for use in a wider range of situations and workspace layouts. User friendly functions have been added to the adorable and compact stapler body.

* In 1990, MAX developed the automatic stapling units that are built-in photocopiers & multi-functional printers. Since then MAX has maintained our status as the global No.1 supplier in this field. (Based on our internal investigations)

Anytime, Anywhere, Friendly!

01 Dual power

Bring it to where you need it.



02 Dual direction design

Save space with flexible positioning.



Fits your style!



64gsm paper **40** Sheets
Flat Clinch

Make documents more stackable with flat clinch technology.

03 Flat clinch, maximum 40 sheets



Filled with friendly features for you!

- ① Corner staple
- ② Staple storage
- ③ One touch open
- ④ Depth control

04 Useful functions

SPECIFICATIONS

Product Detail

Model Name	BH-11F
Stapling Capacity	2-40 sheets (64gsm)
Loading Capacity	100 staples
Stapling Speed	0.7 sec per staple (When using AC adapter)
Throat Depth	90 degree 3-15mm 45 degree 18-30mm

Dimensions	H129 × W69 × D163 mm
Weight	860 g (Stapler body only)
Power Source	DC12V, 3A Use only specified AC adapter (AC100-240V, 50-60Hz) appended to machine. Alkaline AA batteries × 6
Usable Staples	MAX No.11-1M



The specifications and design of the products in this catalogue will be subject to change without advance notice due to our continuous efforts to improve the quality of our products.



MAX CO.,LTD.

6-6, NIHONBASHI, HAKOZAKI-CHO, CHUO-KU, TOKYO, JAPAN
PHONE: 81-3-3669-8131 FAX: 81-3-3669-7104
Web: <https://wis.max-ltd.co.jp/int/>

Distributor: